



A durable, anti-slip hardwood plywood designed to sustain heavy duty usage resulting in low wear and tear over its course of life. Through specialty manufacturing process the high quality plywood board is coated with a hard wearing film overlay hot pressed into a hexagonal shape to boost its anti-slip properties. Paged Hexa is also available as fire-retardant composite board for specialty applications.

KEY BENEFITS AND APPLICATIONS

- Main application areas include: scaffolding, trailer floors, loading platforms, heavy duty terraces, sports facilities, trailers, stages, stands, specialty packaging
- Anti-slip surface
- Wear and tear resistance
- High load bearing capacity
- Made in Poland

STANDARD SIZES * [mm] 1250 x 2500/ 3000
1500 x 2500/ 3000

* Other formats available on request

DIMENSIONAL DEVIATION AS PER EN 315 & EN 324

Length/Width	Deviation
< 1000 mm	± 1 mm
1000 – 2000 mm	± 2 mm
> 2000 mm	± 3 mm
Values according to standards	± 3,5 mm

STRAIGHTNESS AND SQUARENESS DEVIATION AS PER EN 315 & EN 324

± 0,1% lub ± 1mm/m

COATING

Film type	Phenolic / Melamine
Thickness	167 – 220 g/m ²
Colour	Black, black brown, grey
Taber Abraser	500 – 600 (no. of cycles)
Rolling wear	2000 ± 35% / 6000 ± 35%
Anti-slip index	R10

NOMINAL THICKNESS WITH STANDARD DEVIATION, NUMBER OF PLYS, DENSITY AS PER EN 315, EN 323 & EN 324

Nominal Thickness (mm)*	Number of plies (pcs)	Standard Deviation (mm)		Weight (kg/m ²)	Density avg. (kg/m ³)
6,5***	5	-0,6	+0,4	4,5	640-760**
9	7	-0,7	+0,5	6,3	
12	9	-0,8	+0,6	8,4	
15	11	-0,9	+0,7	10,5	
18	13	-0,9	+0,7	12,6	
21	15	-1,0	+0,8	14,7	
24	17	-1,1	+0,9	16,8	
27	19	-1,8	+1,4	18,9	
30	21	-1,9	+1,5	21	
35	25	-1,5	+1,1	24,5	
40	27	-1,6	+1,2	28	

* Other thicknesses available upon request

** As measured at 8-12% moisture content

*** Only for 1250x2500mm

RELEASE OF FORMALDEHYDE (EN 717-1)

E1
The product also meets the limit ½ E1.

BONDING CLASS (EN 314-2)

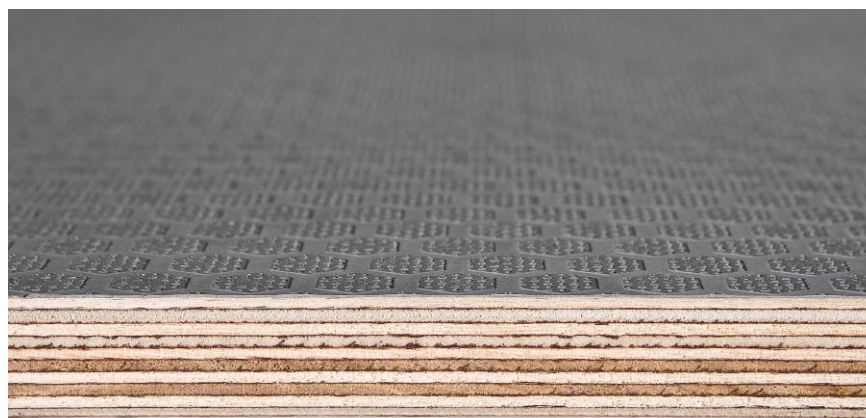
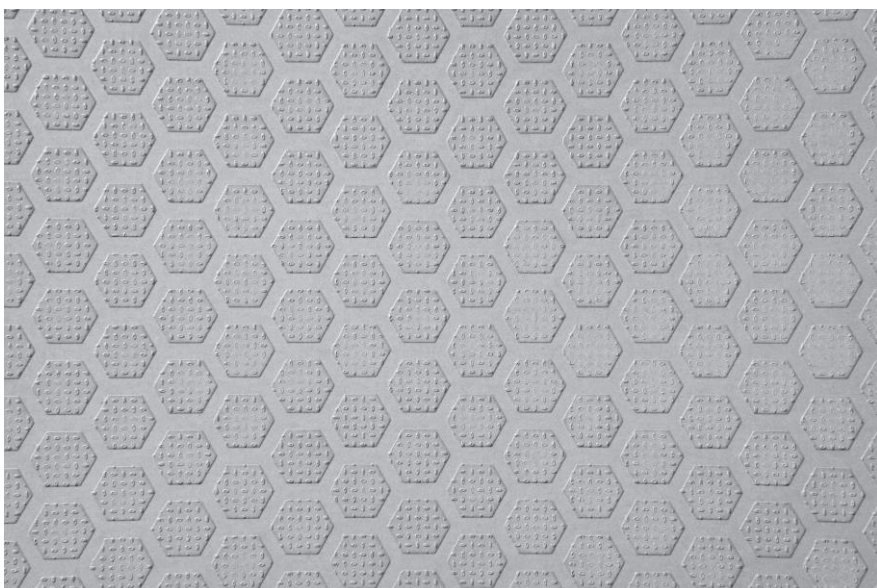
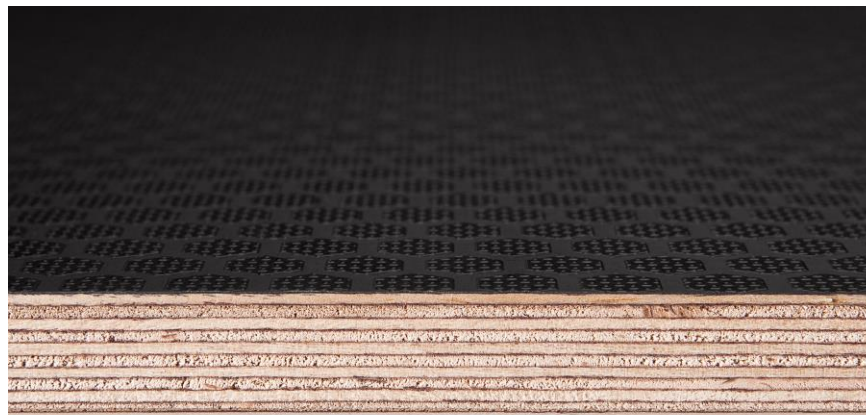
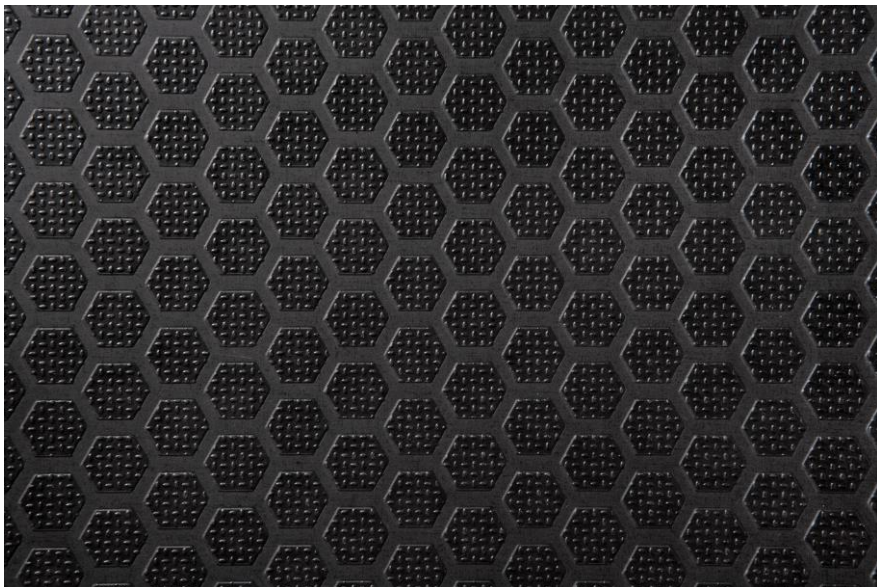
Class 3

MACHINING

Edge machining, CNC machining and drilling on request

ADDITIONAL INFORMATION

1. General Terms of Sales available from www.sklejkapaged.pl
2. Declaration of Performance available from www.sklejkapaged.pl
3. Film-faced plywood in-house norms and standards available from www.sklejkapaged.pl
4. Face coating setup: H/F; H/M.



Our product is made of renewable resource. Our products are characterized by low carbon footprint and are produced from certified wood, thus respecting the natural environment and the local community. The information contained in this document is intended as a guideline only and comes without warranty. We reserve the right to amend product specification sheets without notice.