

# Paged Trans



The most durable, wear and tear resistant anti-slip plywood made with waterproof bonding resin. Paged Trans is overlaid with specialty phenolic film to assure the highest possible wear and abrasion resistance. Thanks to its construction as well as the coating this product boasts the highest anti-slip index of R11 or R13, depending on the final choice of surface coating.

## KEY BENEFITS AND APPLICATIONS

- Main application areas include: technical and heavy duty flooring for trailers and buildings, horse boxes and trailers, railway wagons, warehouses, loading platforms, scaffolding, containers, industry flooring systems
- High load-bearing capacity
- Highest anti-slip index R11 or R13
- Slip and wear resistant surface
- Made in Poland

## STANDARD SIZES\* [mm]

1250x2500/3000  
1500x2500/3000

\*Other formats available on request

## DIMENSIONAL DEVIATION AS PER EN 315 & EN 324

Length/Width	Deviation
< 1000 mm	± 1 mm
1000 – 2000 mm	± 2 mm
> 2000 mm	± 3 mm

## STRAIGHTNESS AND SQUARENESS DEVIATION AS PER EN 315 & EN 324

	Deviation
Straightness	± 0,1% or ± 1mm/m
Squareness	± 0,1% or ± 1mm/m

## NOMINAL THICKNESS WITH STANDARD DEVIATION, NUMBER OF PLYS, DENSITY AS PER EN 315, EN 323 & EN 324

Nominal Thickness (mm)*	Number of plies (pcs)	Standard Deviation (mm)		Weight (kg/m <sup>2</sup> )	Density avg. (kg/m <sup>3</sup> )
12	9	-0,8	+0,6	8,4	640-760**
15	11	-0,9	+0,7	10,5	
18	13	-0,9	+0,7	12,6	
21	15	-1,0	+0,8	14,7	
24	17	-1,1	+0,9	16,8	
27	19	-1,8	+1,4	18,9	
30	21	-1,9	+1,5	21	
35	25	-1,5	+1,1	24,5	
40	27	-1,6	+1,2	28	

\*Other thicknesses available upon request

\*\*As measured at 8-12% moisture content

## COATING

Film type	Phenolic
Thickness	460 g/m <sup>2</sup>
Colour	Black
Taber Abraser	5000 / 10000 (no. of cycles)
Rolling wear	10000 ± 35%
Anti-slip index	R11 / R13

## RELEASE OF FORMALDEHYDE (EN 717-1)

½ E1

## BONDING QUALITY (EN 314-2)

Class 3

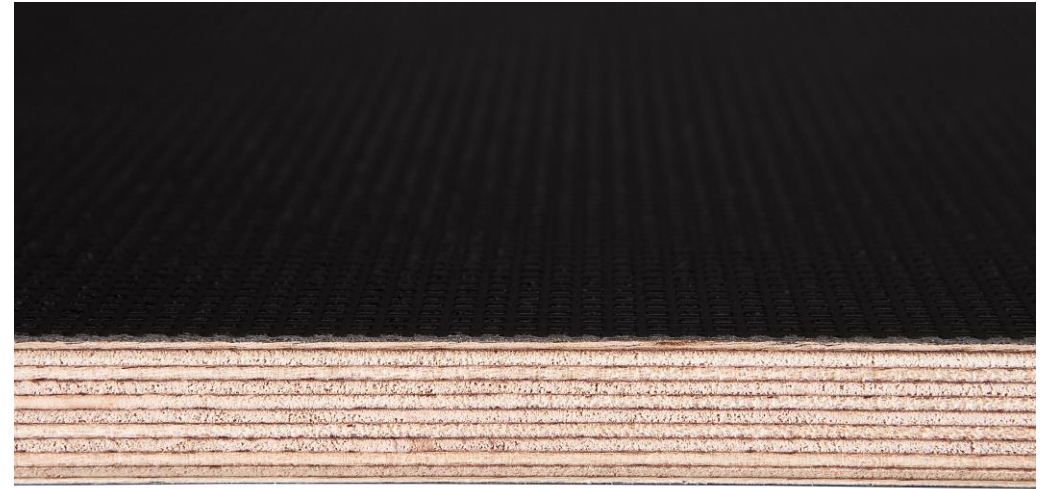
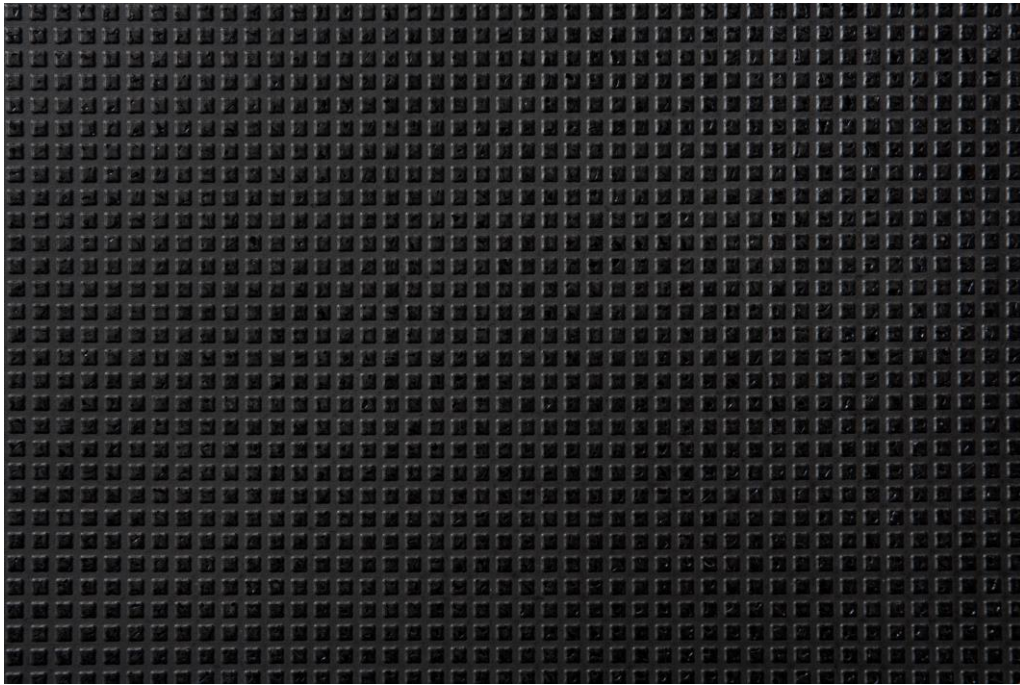
## MACHINING

Edge machining, CNC machining and drilling on request

## ADDITIONAL INFORMATION

1. General Terms of Sales available from [www.sklejkapaged.pl](http://www.sklejkapaged.pl)
2. Declaration of Performance available from [www.sklejkapaged.pl](http://www.sklejkapaged.pl)
3. Film-faced plywood in-house norms and standards available from [www.sklejkapaged.pl](http://www.sklejkapaged.pl)
4. Surface types: T/F, T/M.

Our product is made of renewable resource. Our products are characterized by low carbon footprint and are produced from certified wood, thus respecting the natural environment and the local community. The information contained in this document is intended as a guideline only and comes without warranty. We reserve the right to amend product specification sheets without notice.



Our product is made of renewable resource. Our products are characterized by low carbon footprint and are produced from certified wood, thus respecting the natural environment and the local community. The information contained in this document is intended as a guideline only and comes without warranty. We reserve the right to amend product specification sheets without notice.