



Accredited Research,
Development & Innovation
Centre

2026

What is Paged LabTech

Paged LabTech is a research, development and innovation centre that bridges science and industry to create solutions ready for implementation. We operate as a technology partner to the Paged Group and external customers, supporting them in product development, process optimisation and building competitive advantage.

We combine scientific expertise, state-of-the-art laboratory infrastructure and industrial experience. We carry out projects from concept and research, through prototyping, to full-scale implementation in production.

In line with the brand essence developed during our workshop, we operate like a scientific institute, but think and work like a trusted advisor.



Mission

Through research, innovation and implementation, we help shape the future of industries that are strategic to our customers, including:

- wood processing and wood-based materials,
- transport and logistics,
- construction and structural solutions,
- environmentally safe interiors.

Our goal is not merely to deliver research results, but to develop solutions that work in real manufacturing environments and enhance the competitiveness of our partners.



Vision

Our ambition is to become the world's most recognised research, development and innovation centre – a place to which industry turns not only for answers, but for breakthrough solutions.

We think globally, work across disciplines, and deliver projects that push the boundaries of technological possibilities.



History



2021-2022

Implementation of research and development projects financed by EU funds, including in the areas of:

- innovative wood-based panels,
- composite materials for transport,
- furniture with enhanced durability,
- low-emission solutions.

2024-2025

Expansion of the portfolio with additional solutions (including Paged StringPly, Paged DesignPly and Paged DryGuard FR) and further development of research infrastructure.



2019

Establishment of Paged LabTech as the Research and Development Centre of the Paged Group.

2023

Development of product innovations (including Paged DryGuard, Paged GreenPly and Paged MouldGuard) and expansion of the team's expertise.

Opening of the new headquarters and research infrastructure.

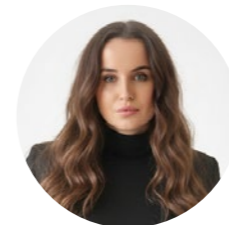
2026

Obtaining accreditation and expanding our portfolio of premium services.

Out Experts



Ewelina Depczyńska



Olga Zajączkowska

Paged LabTech is a multidisciplinary team of experts combining scientific knowledge with industrial experience, led by Dr **Ewelina Depczyńska**, President of Paged LabTech and R&D Director of the Paged Group, and **Olga Zajączkowska**, Member of the Management Board of Paged LabTech and an expert in product development and the creation of innovative brands.

The team's key areas of expertise include:

- materials technologies and adhesive bonding processes,
- product and process development,
- fire-retardant technologies,
- laboratory and application testing.



The team also includes R&D specialists and laboratory technicians who work together to deliver projects from concept to implementation.

We work in close cooperation with:

- industrial partners and end customers,
- production and process engineering teams,
- scientific institutions and research centres in Poland and abroad.

This enables us to combine scientific insight with the practical realities of manufacturing and market needs.

Areas of **Activity**

Services

We offer comprehensive support to industrial companies in the areas of:

- laboratory and application testing,
- new product development,
- optimisation of technological processes,
- materials and technology consulting,
- preparation of technical documentation,
- support in certification and compliance with standards.

We act as a partner throughout the entire product life cycle – from concept to implementation.

Research and Expertise



1

Strength and Mechanical Performance

Testing to determine how materials behave under load, including bending strength and modulus of elasticity, as well as compressive, shear and tensile strength. These tests are used for determining characteristic values, quality control and the development of new structural solutions.

2

Fire Retardancy and Fire Safety

Advanced fire testing, including the use of a cone calorimeter, enables the determination of:

- heat release,
- smoke production,
- time to ignition and combustion behaviour.

These tests are widely used in transport applications (including railway and marine sectors) as well as in the construction industry.

3

Bond Quality and Joint Durability

Testing and analysis of the strength of adhesive bonds under different service conditions, including dry, humid and exterior environments.

These tests make it possible to assess product durability and verify compliance with relevant industry standards.

4

Emissions and Environmental Compliance

Formaldehyde emission testing using both gas analysis and chamber methods enables the assessment of how materials affect indoor air quality and the health of building occupants.

5

Environmental Resistance

Resistance testing for:

- moisture and water,
- UV radiation,
- changing weather conditions.

This includes accelerated ageing tests (QUV) as well as long-term outdoor exposure testing under natural conditions.

6

Coatings and Finishes

Assessment of the durability of lacquers, laminates and other surface coatings, including:

- abrasion resistance (e.g. Taber test),
- colour and gloss stability,
- resistance to surface degradation.

7

Physical Properties of Materials

Analysis of such parameters as:

- density,
- moisture content,
- water absorption (including edge water absorption),
- thickness swelling.

These tests help predict how materials will behave under actual service conditions.

8

Materials and Chemistry

Expertise in the following areas:

- adhesives and their optimisation,
- chemical formulations and compositions,
- material compatibility.

9

Prototyping and Implementation

The laboratory enables the production of prototypes on a pilot scale (up to approximately 1,550 × 1,550 mm), allowing for a rapid transition from research to implementation testing.



Paged LabTech

ul. Kwiatowa 1
12-200 Pisz, Polska

E-mail: contact@pagedlabtech.com

tel. +48 539 522 512

www.pagedlabtech.com